

KANMED^o BABYBED

KANMED BABY WARMING SYSTEM



Kanmed BabyBed offers you many choices. See how you can configure the bed to meet your requirements.



Water at the right temperature provides optimal warming

37°C





Water at the right temperature provides optimal warming

Configure your Kanmed BabyBed

The new Kanmed BabyBed is modern, practical and made for the care of newborn and premature babies in medium and low intensive care situations. The BabyBed was developed together with healthcare professionals to ensure a high level of ergonomics. Kanmed BabyBed gives you unique push down side walls, ease of use and is very easy to clean.

The Kanmed BabyBed is manufactured in Sweden and comes with 5 years limited warranty.

The Kanmed Bed is often used with the Kanmed BabyWarmer creating the Kanmed BabyWarming System. With the Kanmed BabyWarming System you will need fewer incubators and reduce the overall costs.

The Kanmed BabyBed has a unique selection of options and accessories. By selecting models and accessories you will get the bed that fits your needs.

SELECT BED MODEL WITH OR WITHOUT RAIL

With surrounding rail

- BB100 Electrical height adjustment
- BB300 Fixed height
- BB400 Electrical height adjustment
- BB400F Fixed height

Without surrounding rail

- BB101 Electrical height adjustment
- BB301 Fixed height
- BB401 Electrical height adjustment
- BB401F Fixed height



TENT OPTIONS

Various outside and inside colours are available, see www.kanmed.se for the latest designs.

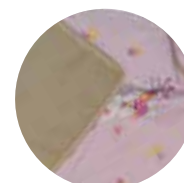
- BB160 (standard) (A)
- BB162 (B)
- BB161 (C)
- BB460 (twin standard) (D)



A



B



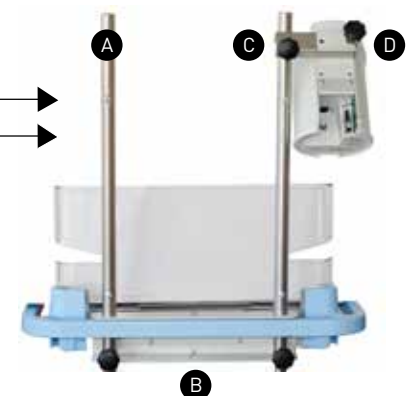
C



D

ACCESSORIES

- 800-106 Kit for rear mount of BabyWarmer control unit complete
- 800-107 Kit for rear mount of BabyWarmer control unit complete (Twin Beds)
- 800-0518 Drip Pole ø 25 mm, L 66 cm (A)
- 800-0060 Bracket for drip pole BB100/101 and BB300/301 (B)
- 800-0059 Bracket for drip pole BB400/401 and BB400F/401F
- 800-0527 Holder for BW3 control unit on 25 mm drip pole. (C)
Must also have 800-0057
- 800-0057 Bracket handle for BW3 control unit (D)



Kit for rear mount

STANDARD BED DELIVERY

All Beds include: Tent BB160, (BB460 for Twin Bed), Tent Pole, Mattress (sealed), Side walls, one Storage Box BB170, Power cable and user manual.

(The beds on the pictures are extra equipped)

Twin version with 2 individually adjusted Kanmed Baby Warmers and foot pedal front



With rail



Without rail



On all Kanmed beds

ACCESSORIES

- BB171 Bottle Holder
- 800-0517 Card Holder, for sidewalls
- BB173 Kit for ± 17 degree tilt
- 800-0502 Cable for BabyWarmer control unit (outlet on Pillar, one cable less on the floor)
- BB170 Storage box in front (extra)
- BB170 Storage box rear (extra)
- 800-0530 Shelf 33 x 33 cm Edges 3 cm (Plastic coated steel)

ELECTRICAL HEIGHT ADJUSTMENT

- BB175 Foot pedal left (Standard)
- BB175 Foot pedal right (Note on your order)
- BB176 Foot pedal front

WHEELS

- 700-0874 Standard 125 mm (A)
- 700-0884 Double wheel 95mm (B) (Lowers the bed about 4 cm)



KANMED^o BABYBED

	BB100 / 101 Standard BB300 / 301 Fixed height		BB400 / 401 Twin BB400F / 401F Fixed height Twin	
	L 85 cm W 63 cm With rails	L 83 cm W 52 cm Without rails	L 95 cm W 80 cm With rails	L 93 cm W 70 cm Without rails
Outer dimensions	L 85 cm W 63 cm With rails	L 83 cm W 52 cm Without rails	L 95 cm W 80 cm With rails	L 93 cm W 70 cm Without rails
Wheel base / Wheels	87 cm x 64 cm / Diameter 12,5 cm alt. 9,5 cm, with brakes			
Bed Tray dimensions	L 69 cm W 46,5 cm H 9 cm		L 76,5 cm W 64 cm H 9 cm	
Height from floor to Bed Tray bottom	Min 78 cm, Max 108 cm. Fixed height is 80 cm (9,5 cm wheels lower all beds about 4 cm)			
Weight	About 46 kg Fixed height 36 kg		About 52 kg Fixed height 42 kg	
Tilt	About 17 degree (option ± 17 degree)			
Tent / Mattress	Washable 60°C (90°C) / Soft foam, sealed watertight cover			
Storage Box / Shelf	L 32 cm W 33 cm H 12 cm, Lid 32 x 33 cm / 33 x 33 cm			
Voltage BB100 / 400	230V 50Hz / 60Hz or 115V 60Hz, 150VA. Protection BB100 / 400: Class I			

► Note that the Baby Warmer may be used seperately in any suitable bed.

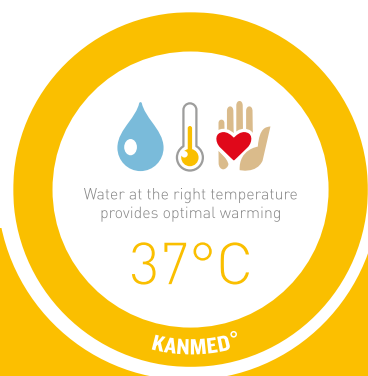
KANMED^o BABYWARMER

It is the soft warm
Water Mattress that makes
the Kanmed Baby Warming
System unique

The Kanmed Baby Warming system is the most baby friendly way to care for your babies. Only a soft warm water mattress can substitute the warming efficiency of a modern incubator. When the baby is stable and the skin has matured it can be moved to the open Kanmed Baby Warming System. Parents can now easily get involved and practice the care of their new-born or premature baby. The important parent baby bonding and



breast feeding is now much simpler. The Kanmed Baby Warming System is used in hospitals worldwide as a safe, cost effective and baby friendly alternative to continued treatment in the incubator. Thereby the amount of incubators required can be reduced saving money for other investments in the Neonatal Unit. The system is well documented in published medical studies.



More than 10 000 units in use worldwide
that have warmed more than 2 million babies

See www.kanmed.se for more information
and to find your local dealer for a trial

KANMED^o

Kanmed AB
Gårdsfogdevägen 18B. SE-168 67 Bromma, Sweden
Telephone: +46 8 564 80 630. Telefax: +46 8 564 80 639
E-mail: info@kanmed.se. www.kanmed.se